

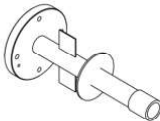

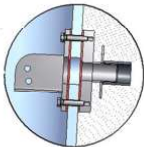

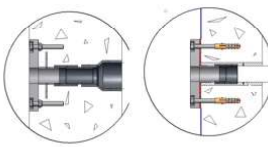


## A7 – Constructional preparations: Cable duct for SCUBA-drive®

### General:

- De SCUBA-drive® tubular or in-roller motor is being delivered with a 10m long motor cable, connected tightly to the motor.
- Guide the motor cable outside of the pool, through a conduit to a connection box. The conduit fills-up with water, we strongly recommend to use our cable connection kit (see AT-MAN-B4 : Electrical preparations)
- This connecting box/kit must be accessible at all times, it makes it easy for the motor to be removed or replaced in case of failure.
- The center of the wall duct is also the center of the roller shaft.

Wall duct Scuba			
<b>Montage A</b> Thin wall Mono block (Polyster – Vinylester – Acryl)	<b>Montage B</b> Thin wall Stainless Steel	<b>Montage C</b> Concrete or brickwork Wall thickness 250 of 300mm Pool wall to be built	<b>Montage D</b> Concrete or brickwork
			
AK-000362	AK-000559	<b>Motor side:</b> AT-005565 → 250mm AT-005570 → 300mm  <b>Non motor side (pour in):</b> AT-005575	AT-002065
			

Choose the Type of mounting who suits your project.

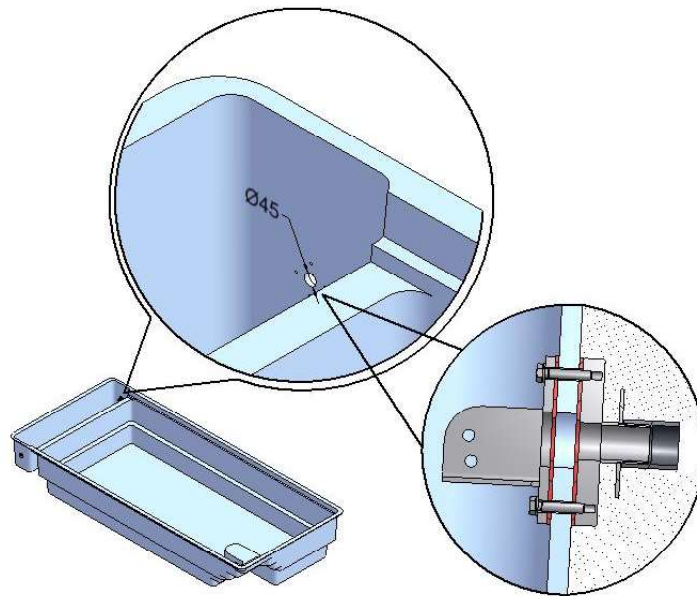
Contact T&A in case of any doubts.  
We will help you to choose the correct wall duct in function of your type of pool.

**Monatge A**  
***Thin wall (Mono block or element pool)***

**Before back filling the swimming pool**

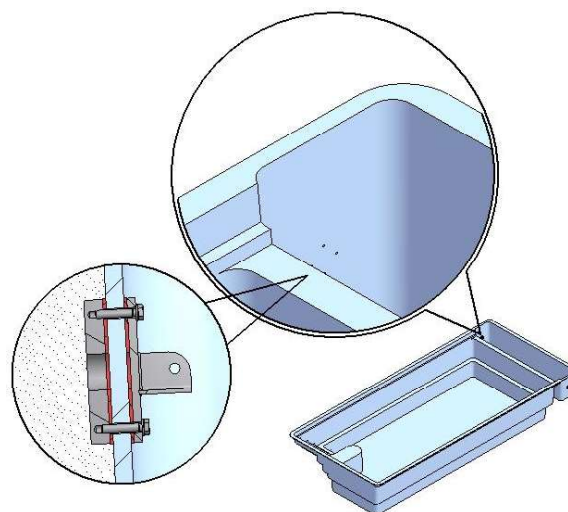
**Motor side:**

- Drill a hole of Ø45mm at the exact position of the roller shaft.
- On the built-in flange you can find a connection (50mm) to fix a conduit. In this way the motor cable can be guided in to the connection box beside the pool.
- The conduit fills-up with water and must always be kept above the water level of the pool to avoid emptying of the swimming pool, we strongly recommend to use our cable connection kit (see AT-MAN-B4 : Electrical preparations)



**Non motor side:**

- Drill fixing holes (Ø 9mm) for the flange through the wall, in line with the roller shaft. Use the flange as a mould to mark the holes.



### **Montage B**

#### ***Thin wall Stainless Steel***

- For stainless steel pools we have a specific set of flanges which can be welded directly on the pool wall (AK-000559 - 1.4404 - AISI 316L)
- On the built-in flange you can find a connection (50mm) to fix a conduit. In this way the motor cable can be guided in to the connection box beside the pool.
- The conduit fills-up with water and must always be kept above the water level of the pool to avoid emptying of the swimming pool, we strongly recommend to use our cable connection kit (see AT-MAN-B4 : Electrical preparations)

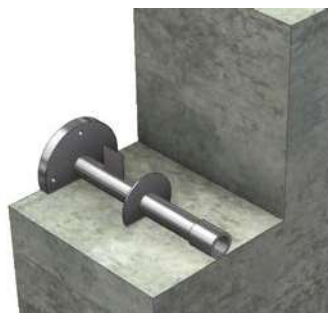
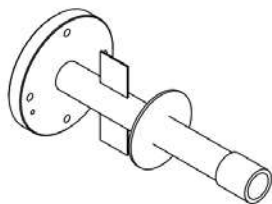


### **Montage C**

#### ***Concrete or brickwork - Wall thickness 250 of 300mm***

#### ***Pool wall to be built***

- We can offer you a wall duct completely from Stainless Steel to pour in.
- This is available in a length of 250mm (AT-005565) and 300mm (AT-005570)
- It's also possible to order a flansh for the non-motor side (AT-005575) to install in the formwork
- On the built-in flange you can find a connection (50mm) to fix a conduit. In this way the motor cable can be guided in to the connection box beside the pool.
- The conduit fills-up with water and must always be kept above the water level of the pool to avoid emptying of the swimming pool, we strongly recommend to use our cable connection kit (see AT-MAN-B4 : Electrical preparations)



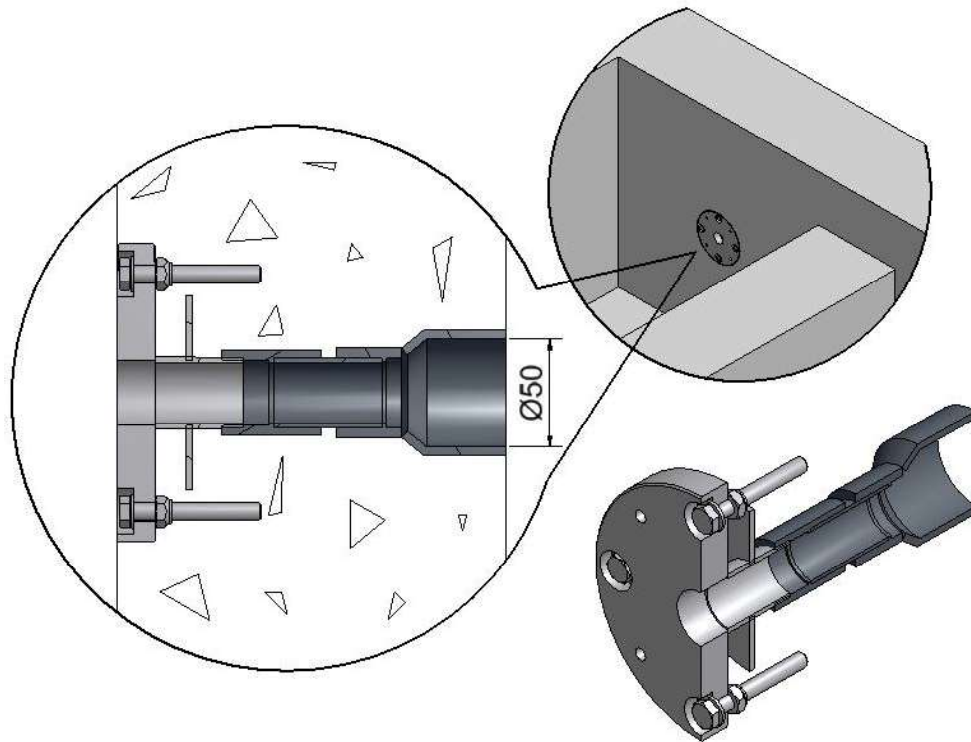
### **Montage D**

***Concrete or brickwork – Other Wall thickness as 250 of 300mm***  
***Pool wall to be built***

**Motor Side**

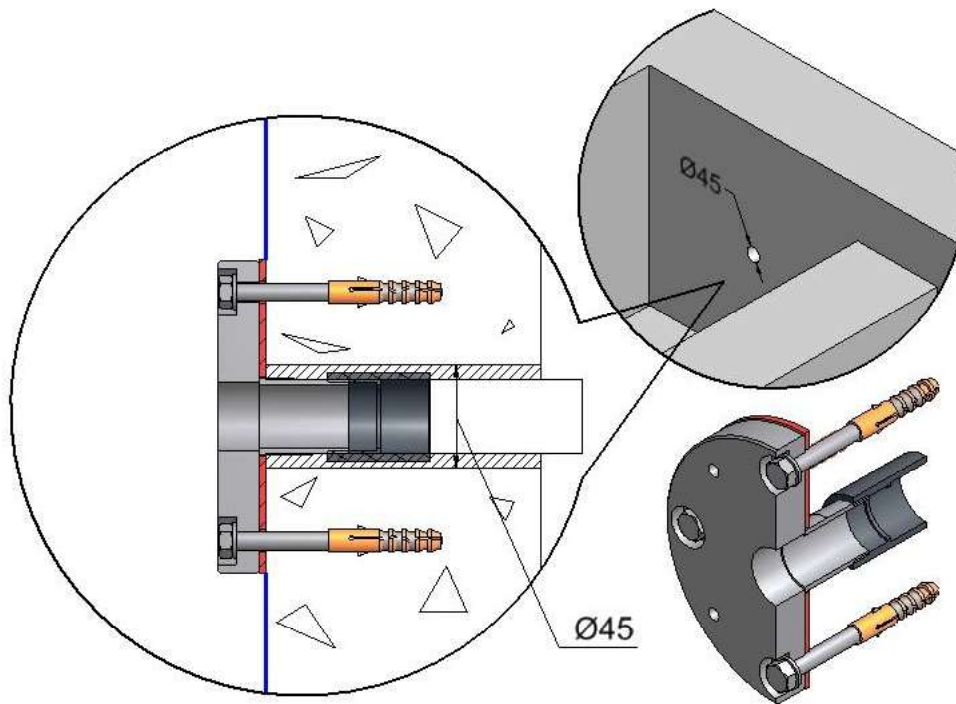
**Pool wall to be built:**

- Build or cast the built-in flange at the same time as erecting the wall so the flange will be anchored properly in the wall.
- On the built-in flange you can find a connection (50mm) to fix a conduit. In this way the motor cable can be guided to the connection box at the outside the pool.
- The conduit fills-up with water and must always be kept above the water level of the pool to avoid emptying of the swimming pool, we strongly recommend to use our cable connection kit (see AT-MAN-B4 : Electrical preparations).



**Pool wall already built:**

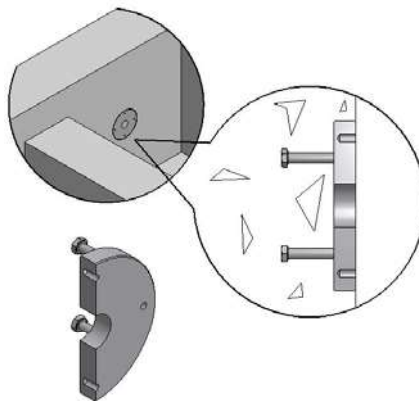
- Drill a hole of Ø45mm through the wall, at the exact position of the roller shaft.
- The built-in flange is being mounted on top and being anchored on the wall with bolts and plugs. In order to guarantee a perfect connection in brickwork, we recommend a chemical anchor (this is not supplied from the manufacturer).



## **Non motor side**

### **Pool wall to be built:**

- Cast concrete (min. 25cm x 25cm) at the non-motor side, to make sure you have a solid mounting of the flange. In order to guarantee a perfect connection in brickwork, we recommend a chemical anchor (this is not supplied from the manufacturer).
- You can work with our pour-in flange. Build or cast the built-in flange at the same time as erecting the wall so the flange will be anchored properly in the wall. (AT-002598)



### **Pool wall already built:**

- The flange is being mounted on top and being anchored on the wall with bolts and plugs. In order to guarantee a perfect connection in brickwork, we recommend a chemical anchor (this is not supplied from the manufacturer).

